



**LIGURE**  
SCUBA DIVER

OWNER'S HANDBOOK  
**THE TARTARUGA SERIES**

SW200 / GMT SW330 - ETA2893



# *Il tempo è galantuomo...*

The year 2020 is for everyone a year that will not soon be forgotten. The world was dominated by working from home, lockdowns and the terrible consequences of Covid-19. It was also the year that we, as four friends, decided to realize our dream: to create our 'ultimate diving watch'. The idea was the start of an exciting adventure full of challenges and pushing boundaries and discovering new possibilities. A functional and stylish diving watch made with high quality materials by the best selected manufacturers. We hope that you will wear this **LIGURE** SCUBA DIVE WATCH with as much pride and pleasure as we made it for you.



---

**LIGURE**  
SCUBA DIVER

How to operate your

**LIGURE** GMT SW330 SCUBA DIVER

## Specifications

### THE CASE

- Tartaruga ergonomic shaped
- Case width 41 mm
- Lug to lug 42.5 mm
- Lug width 22 mm
- 316L stainless steel
- Brushed
- Screw down crown

### THE MOVEMENT

- Swiss Sellita SW330 GMT
- Automatic, hack & wind
- Fast beat, 28.800 bph
- Quick date setting
- 25 jewels
- 42 hours power reserve
- Quick second time setting

## THE BEZEL

- 120-clicks unidirectional
- 316L stainless steel
- Improved coin edge for better grip
- Slightly descending
- Sapphire bezel insert
- X1 Swiss Super Luminova

## HANDS

- Enlarged minute hand
- X1 Swiss Super Luminova
- Extra GMT hand
- 3D shape for better readability

## THE GLASS

- Domed Sapphire crystal
- HR clear anti reflection coating, water repellent
- Ultra clear sight
- Extremely strong, scratch proof

## LUME

- On bezel insert, indexes and hands
- X1 Swiss Super Luminova
- 60% more light output
- Manually applied

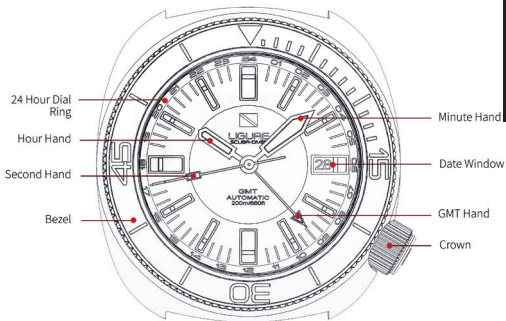


How to operate your

**LIGURE** GMT SW330 SCUBA DIVER

## Display and control buttons

Your LIGURE GMT Scuba Diver has a maximum power reserve of 42 hours when fully wound. To re-power the watch after a period of non-use, simply wind the crown for approximately 20 revolutions. Normal wearing will very quickly allow the rotor to start re-powering the watch over time after putting it on your wrist.



How to operate your

**LIGURE** GMT SW330 SCUBA DIVER

## Setting the time, date and GMT hand

For a superior water resistance your crown is of the screw-in type. The crown should sit flush to the case (**position 1**) in order to maintain water resistance.

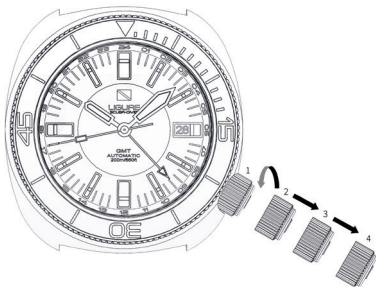
First unscrew the crown anti-clockwise from the case to **position 2** for winding in power. Wind in a clockwise direction to re-power the watch. Your GMT SW330 has a maximum power reserve of 42 hours when fully wound. Normal wearing will allow the rotor to start re-powering the watch over time after putting on your wrist.

Pull gently into **position 3**. For rapid date correction, turn in an anti-clockwise direction. To set the GMT hand, turn the crown clockwise and rotate the hand until you have reached the



desired time indication. The GMT hand moves in one-hour increments.

Pull gently into **position 4**. This position is used for handsetting and stopping of the seconds hand. For precise time setting it is recommended to pass beyond the desired minute and to set the hand backwards.



**PLEASE NOTE:**

Date correction should not be carried out between 20.00 hr and 02.00 hr as the watch gearing will already be aligning itself to change the date. The crown should always be pushed in after adjustment, and it is best to do so from position 3 to avoid advancing beyond the desired date. You must always ensure the crown is fully tightened before any use in water.

How to operate your

**LIGURE** GMT SW330 SCUBA DIVER

## Using the GMT hand for travel

Set the time in your new destination by pulling the crown into **position 4** and move the hour/minute hands until they indicate the desired time.

Push crown into **position 3** and wind, clockwise, the GMT hand around the 24-hour scale on the 24 hour dial ring/rehaut until you have the right time at home. E.g. If you're travelling from London at 12:10 to New York, you would turn the hour/minute hands to 7:10 (New York time is five hours behind London) and wind the GMT hand around to the 12:10 position.

Once set, it means that, for example, you can gauge the time to ring your friends and family without waking them in the middle of the night.



How to operate your

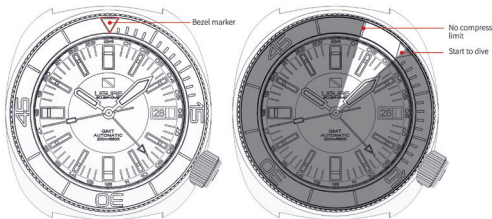
**LIGURE** GMT SW330 SCUBA DIVER

## Diving with your watch

If using the bezel for a dive and let's say the recognised maximum "no-stop time" is 55 minutes, then in this example (shown right) the time at the surface immediately before the dive is 10.08am. However the bezel marker is at the 12.00 hr position.

Move the bezel marker anti-clockwise so that it aligns with the 8 minute position.

You can now read that the 55 minute no decompression limit will occur at 3 minutes past the next hour.



#### PLEASE NOTE:

It is always useful and best practice to make a note on a dive slate before entering the water and to carry a set of dive tables should the dive plan change during the course of a dive. A safety stop for 3 to 5 minutes at 15ft is recommended at the end of all dives. A safety stop for 3 minutes at 15ft is required any time you come within 3 pressure groups of a no decompression limit, and for any dive to a depth of 100ft or deeper.



How to operate your

**LIGURE** GMT SW330 SCUBA DIVER

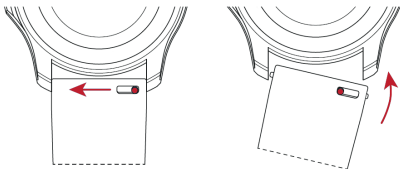
## Straps and bracelets

As you would expect, we place as much emphasis on the quality of our straps and bracelets as we do our watches. We only use the “nest materials in our straps, with quick-release pins also included for your convenience.

The following guidelines explain how easy it is to use, adjust and replace your Christopher Ward strap or bracelet.

## Using the quick-release pins on your strap or bracelet

1. Locate the quick-release pin (or pins) on your strap or bracelet. Pull the pin(s) inwards to detach.
2. To reattach your strap or bracelet, pull the pin(s) inwards, and align the spring bars so that they click securely into the lug holes on each side.



How to operate your

**LIGURE** GMT SW330 SCUBA DIVER

## Water resistance

Although your watch has been through vigorous static pressure testing, it is worth remembering that there are many variables that can effect the water resistance of your watch. For instance, arm movements during swimming and the sudden impact of diving and water sports will drastically increase the pressure the watch is under.

Wearing your watch in the bath, shower, or sauna can also have an effect as a rapid increase in temperature can cause seals to expand and in extreme cases, malfunction or create condensation.



For these reasons, the water resistance rating of your watch should only ever be considered a guideline and we strongly recommend they are always adhered to.

GMT SW330 - ETA2893



---

**LIGURE**  
SCUBA DIVER

How to operate your

**LIGURE** GMT SW330 SCUBA DIVER

## Service warranty

LIGURE watches is delighted you have chosen a timepiece from its collection, which lives up to the brand's long-established know-how, based on research combined with technical excellence and timeless elegance.

We provide a **24-month warranty** on any servicing operation. In the event of defects covered by this warranty, we will repair or replace, at our discretion and free of charge, all detached components and/or correct faulty operation which has been identified as such by our Customer Services department. All other rights resulting from faulty workmanship are expressly excluded.

THE WARRANTY DOES NOT COVER:

Normal wear and tear (such as scratches on the

case and/or glass; alteration of the colour and/or material of cases, straps, bracelets and chains made of leather, textile, rubber or any other non-metallic material; the PVD coating; the colour of bronze);

Damage to any part of the watch resulting from unsuitable/improper use, neglect, carelessness, accidents (knocks, dents, crushing, glass breakage, etc.), incorrect use of the watch, or failure to follow the instruction manual;

Harm of any nature whatsoever resulting directly or indirectly from using the LIGURE watch or from any operational failure, defect or lack of precision in the watch;

**The warranty is only valid if the serial number on your international guarantee card enclosed with your LIGURE watch is registered on our website within 30 days after purchase.**







How to operate your  
**LIGURE** SW200 SCUBA DIVER

## Specifications

### THE CASE

- Tartaruga ergonomic shaped
- Case width 41 mm
- Lug to lug 42.5 mm
- Lug width 22 mm
- 316L stainless steel
- Brushed
- Screw down crown

### THE MOVEMENT

- Swiss Sellita SW200 GMT
- Automatic, hack & wind
- Fast beat, 28.800 bph
- Quick date setting
- 26 jewels
- 38 hours power reserve

## THE BEZEL

- 120-clicks unidirectional
- 316L stainless steel
- Improved coin edge for better grip
- Slightly descending
- Sapphire bezel insert
- X1 Swiss Super Luminova

## HANDS

- Enlarged minute hand
- X1 Swiss Super Luminova
- 3D shape for better readability

## THE GLASS

- Domed Sapphire crystal
- HR clear anti reflection coating, water repellent
- Ultra clear sight
- Extremely strong, scratch proof

## LUME

- On bezel insert, indexes and hands
- X1 Swiss Super Luminova
- 60% more light output
- Manually applied

SW200



**LIGURE**  
SCUBA DIVER

How to operate your

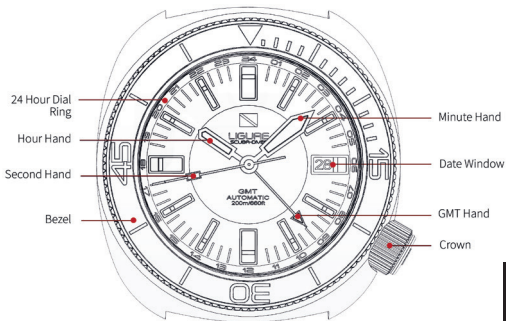
**LIGURE** SW200 SCUBA DIVER

## Display and control buttons

Your LIGURE Scuba Diver has a maximum power reserve of 38 hours when fully wound.

To re-power the watch after a period of non-use, simply wind the crown for approximately 20 revolutions. Normal wearing will very quickly allow the rotor to start re-powering the watch over time after putting it on your wrist.





SW200

How to operate your

**LIGURE** SW200 SCUBA DIVER

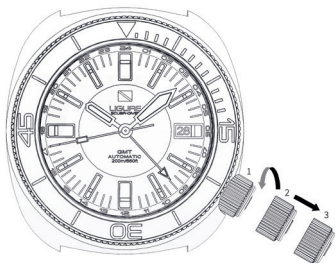
## Winding manually and setting the time and date

For a superior water resistance your crown is of the screw-in type. The crown should sit flush to the case (**position 1**) in order to maintain water resistance.

If the watch has not been worn for a while and has stopped, start it again by winding manually. Turn the crown clockwise approximately 22 times in **position 1**. Afterwards, the mechanism will be wound automatically thanks to your wrist movements

Unscrew or pull the crown to **position 3** to set the time. Adjust the hour by rotation of the crown clockwise. Place the hands on the desired hour, while continuing to turn clockwise. Replace the crown to position 1.

Unscrew or pull the crown to **position 2** to set the date. Set the date by rotating the crown anti-clockwise until the desired date is shown. Replace the crown to position 1.



**PLEASE NOTE:**

Date correction should not be carried out between 20.00 hr and 02.00 hr as the watch gearing will already be aligning itself to change the date. The crown should always be pushed in after adjustment. You must always ensure the crown is fully tightened before any use in water.

How to operate your

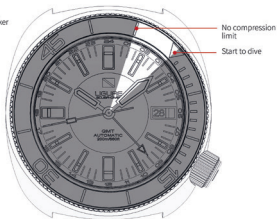
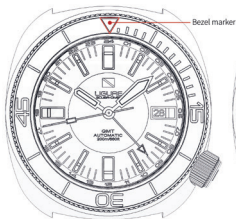
## **LIGURE** SW200 SCUBA DIVER

### Diving with your watch

If using the bezel for a dive and let's say the recognised maximum "no-stop time" is 55 minutes, then in this example (shown right) the time at the surface immediately before the dive is 10.08am. However the bezel marker is at the 12.00 hr position.

Move the bezel marker anti-clockwise so that it aligns with the 8 minute position.

You can now read that the 55 minute no decompression limit will occur at 3 minutes past the next hour.



#### PLEASE NOTE:

It is always useful and best practice to make a note on a dive slate before entering the water and to carry a set of dive tables should the dive plan change during the course of a dive. A safety stop for 3 to 5 minutes at 15ft is recommended at the end of all dives. A safety stop for 3 minutes at 15ft is required any time you come within 3 pressure groups of a no decompression limit, and for any dive to a depth of 100ft or deeper.

SW200



**LIGURE**  
SCUBA DIVER

How to operate your

**LIGURE** SW200 SCUBA DIVER

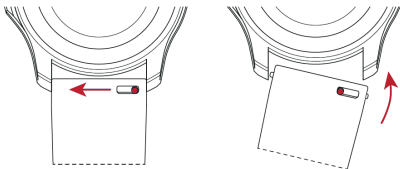
## Straps and bracelets

As you would expect, we place as much emphasis on the quality of our straps and bracelets as we do our watches. We only use the “nest materials in our straps, with quick-release pins also included for your convenience.

The following guidelines explain how easy it is to use, adjust and replace your Christopher Ward strap or bracelet.

## Using the quick-release pins on your strap or bracelet

1. Locate the quick-release pin (or pins) on your strap or bracelet. Pull the pin(s) inwards to detach.
2. To reattach your strap or bracelet, pull the pin(s) inwards, and align the spring bars so that they click securely into the lug holes on each side.



SW200

How to operate your

**LIGURE** SW200 SCUBA DIVER

## Water resistance

Although your watch has been through vigorous static pressure testing, it is worth remembering that there are many variables that can effect the water resistance of your watch. For instance, arm movements during swimming and the sudden impact of diving and water sports will drastically increase the pressure the watch is under.

Wearing your watch in the bath, shower, or sauna can also have an effect as a rapid increase in temperature can cause seals to expand and in extreme cases, malfunction or create condensation.



For these reasons, the water resistance rating of your watch should only ever be considered a guideline and we strongly recommend they are always adhered to.

SW200



---

**LIGURE**  
SCUBA DIVER

How to operate your

**LIGURE** SW200 SCUBA DIVER

## Service warranty

LIGURE watches is delighted you have chosen a timepiece from its collection, which lives up to the brand's long-established know-how, based on research combined with technical excellence and timeless elegance.

We provide a **24-month warranty** on any servicing operation. In the event of defects covered by this warranty, we will repair or replace, at our discretion and free of charge, all detached components and/or correct faulty operation which has been identified as such by our Customer Services department. All other rights resulting from faulty workmanship are expressly excluded.

THE WARRANTY DOES NOT COVER:

Normal wear and tear (such as scratches on the

case and/or glass; alteration of the colour and/or material of cases, straps, bracelets and chains made of leather, textile, rubber or any other non-metallic material; the PVD coating; the colour of bronze);

Damage to any part of the watch resulting from unsuitable/improper use, neglect, carelessness, accidents (knocks, dents, crushing, glass breakage, etc.), incorrect use of the watch, or failure to follow the instruction manual;

Harm of any nature whatsoever resulting directly or indirectly from using the LIGURE watch or from any operational failure, defect or lack of precision in the watch;

**The warranty is only valid if the serial number on your international guarantee card enclosed with your LIGURE watch is registered on our website within 30 days after purchase.**

SW200



**LIGURE**  
SCUBA DIVER

